



# Inflnxt

THE NEXT GENERATION SECURE SD WAN

## NEXT GENERATION SECURE SD-WAN

is a transformational way to architect, deploy and operate corporate WANs, as it provides a simplified way of deploying and managing remote branch office connectivity in a cost-effective way.

### VIRTUAL WAN FABRIC

- Secure overlay fabric
- Transport independence
- Network segmentation

### SD-WAN GATEWAY

- Local policy enforcement
- WAN path selection, network QoS, firewall, service chaining
- Telemetry feedback loop to/from SD-WAN controller

### SD-WAN CONTROLLER

- Establishes and manages secure virtual overlay to sites
- Defines service chains to enable policy goals
- Manages distribution of interpreted policy to individual elements

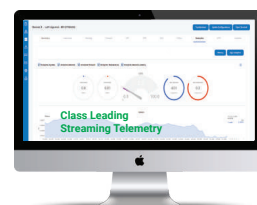
### MANAGEMENT PORTAL

- Single pane of glass for network configuration and management : cloud-hosted and on-premises
- Zero touch provisioning
- Portal where user defines global policies
- Aggregated visibility on application performance
- User / Group based policies with support for Active Alerts, Logs Directory / LDAP or equivalent
- Centralized single console management of SD-WAN and UTM features



### SD-WAN FEATURES

Routing	OSPF, BGP, Static, PBR, PPPOE
User Experience	Application Prioritization over available WAN
GPS (Optional)	Geo-Location tagging for device Geo-Fencing
VPN	IPSEC, L2TP, GRE, DMVPN, Remote VPN
QOS	Shaping Policy, Rate Limiter, Traffic Policies IPv4/IPv6, Traffic Shaper, DSCP Tagging
NAT	Source NAT, Destination NAT, NATv6, NAT64, NAT Traversal
Network Visibility	Real-Time Streaming Telemetry
Dynamic Multi-path Optimisation	KPI's-Jitter, Packet Loss, Latency, Per packet, Per Flow Load Balancing, FEC
Application Visibility	5000+ Applications, Application Awareness
High Availability	VRRP, Clustering
WAN Overlay over Cloud	Public-AWS, Azure, Private
WAN Policy	WAN Aggregation, LTE and Broadband Intelligent KPI Based Switchover
Advanced LTE	LTE Primary and Bandwidth Aggregation Capability
Troubleshooting	Bandwidth Measure, IPERF, Packet Capture, MTR, Speed Test, Traceroute, Alerts, Logs



# LAYER7 SECURITY CAPABILITIES

## VISIBILITY

- Near real-time Reporting & Logging
- Drill-down Advanced Network Analytics
- More than 60 pre-defined Reports
- Application Visibility & Reporting
- Web/DNS/TLS Reporting
- Custom Reports
- PDF Reports

## SECURITY

- Protects all ports
- Protect all users/devices
- Auto-blocking based on Real-time Threat Intelligence
- Malicious server filtering
- Phishing server filtering
- Protection against new Malware/Virus/Phishing Outbreaks
- Blocking newly Registered/Recovered/Dead/DynDNS sites
- Automatic Botnet Filtering
- Blocking DNS/ICMP Tunnels
- Policy based Transparent TLS/SSL Inspection

## CLOUD CENTRAL MANAGEMENT

- Cloud Management
- Centralized Reporting
- Centralized Policies
- Cloud Scheduled Reports

## CLOUD THREAT INTELLIGENCE

- Cloud Web Categorization
- Cloud Threat Intelligence
- Automatic Botnet Detection

## FILTERING & COMPLIANCE

- Application Control
- Ad Blocking
- 300+ Million categorized Websites
- Customizable Web Categories/Whitelisting
- DNS based content filtering
- TLS/QUIC SNI based filtering
- Web & URL Filtering
- Customized Landing Pages for Blocked Sessions

## USER-BASED FILTERING

- User-Based Reporting (Captive Portal)
- User-Based Reporting (AD/LDAP)
- User-Based Filtering policies (Captive Portal)
- User-Based Filtering policies (AD/LDAP)

## POLICY-BASED FILTERING

- Filtering policies according to Subnet/IP Addresses
- Filtering policies according to User/Groups
- Time-Based/Scheduled Filtering
- Filtering policies according to Interface/VLAN
- Ability to create filtering exemptions

## INTEGRATIONS

- Reports streaming to external Elasticsearch Servers
- Reports streaming to external Syslog Servers
- Central Elasticsearch Reporting for all firewalls
- RESTful API access for configuration and management

## HARDWARE SPECIFICATION

Appliance Model	iEdge-100
Deployment Mode	Branch/Hub
Core/s	4
Chipset	Intel-J1900
CPU Architecture	X86
Memory(GB)	8
Storage	32-128 GB SSD
Network Interfaces	Universal 4x1G
USB (Supports 3G/4G Dongle for WAN)	1x2.0 , 1x3.0
V.35 Serial Port	Supported Through External Converter
SIM Slot (3G/4G/LTE)	1 (Optional)
Console	HDMI
WiFi	Optional (Dual Band, 802.3 b,g,n,ac Wave 1, 1x1 MIMO)
Power Supply	5V/4A External DC Adapter
Power Input(AC)	230 V
Power Rating(W)	20
Operating Temperature	-10°C to 60°C
Humidity	5%-95% Relative Humidity, Non-Condensing
Physical Dimensions (L x W x H)mm	135x125x40
Weight(kg)	0.55
Form Factor	Deskmount

## AGGREGATED PERFORMANCE

Aggregated Application Visibility Throughput(Gbps)	3
Aggregated IPSEC VPN Throughput(Gbps)	2
Aggregated L4 firewall Throughput(Gbps)	2
Aggregated NGFW L7 Throughput(Gbps)	1
Packets Per Second(Mpps)	4.2

## SESSIONS

New Connections Per Second	Up to 8K
Max Sessions (IPv4 or IPv6)	Up to 42K

## POLICIES

NAT Rules	500
-----------	-----

## ROUTING

IPv4 Forwarding Table Size	Up to 10000
IPv6 Forwarding Table Size	Up to 10000

## QOS

Number of QoS Policies	1000
DSCP Marking by Policy	Yes

## IPSEC VPN

Site-to-Site	500
--------------	-----

## INFINXT REMOTE ACCESS VPN

Max Tunnels(Client based IPsec)	250
---------------------------------	-----

## HIGH AVAILABILITY

Device Count	2
--------------	---



**Infinity  
labs**

Registered Office :  
Teerth-Technospace, C-609,  
Bangalore-Mumbai Highway, Baner,Pune, IN – 411045  
Website : [www.infinitylabs.in](http://www.infinitylabs.in)Email: [sales@infinitylabs.in](mailto:sales@infinitylabs.in)

- Founded in 2014, Infinity Labs is one of the fastest growing Technology Consulting & Software Solutions.
- Serving customers across the Globe (India, US, UK & Middle East)
- Solutions customised for Telecom, Banking, Media, Retail, Education & Government verticals